

CyberEdge®

# What's New

Our latest CyberEdge upgrade includes some major improvements - not only to help protect your clients' networks before and after an attack, but also to help get their businesses back on track after a cyber loss. Our deductible free 24/7 First Response service, our range of cyber loss prevention services and our claims expertise have made CyberEdge one of the leading cyber insurance policies available today.



## Protecting the revenue



### Hour Zero Network Interruption Cover

In case of a qualified Network Interruption Event, we will cover losses arising from the actual moment the cyber event occurs (the event qualifies as such once qualifying period has lapsed and costs are covered after applying the agreed deductible).



### Gross Profit v/s Net Profit basis

Network Interruption loss is calculated on either a Gross Profit basis or a Net Profit basis - whichever is the most appropriate for the client.



### Proactive cyber mitigation

In case of a qualified Cyber Event, we empower clients to proactively minimize, as early as possible, the impact of the incident on their businesses covering mitigation costs from the beginning of the event (the event qualifies as such once qualifying period has lapsed and costs are covered after applying the agreed deductible).



### When you need to shut it down

Sometimes the best course of action may be to shut the network down, taking it offline to prevent further data loss. At the same time this may impact revenue and profit for some businesses - which can now be covered under our Network Interruption module.



## Protecting the network

### As long as it takes

With CyberEdge, there's now no time limit on how long we'll pay event management costs to get the incident under control. Clients benefit of a range of expert cyber services (from Legal, IT and PR services to Credit and ID Monitoring, Data Restoration and Breach Notification costs) until the incident is resolved.

### Integrated systems coverage

Due to a more automated and integrated system, incidents can have a devastating effect on clients' production capabilities, supply lines and design processes. CyberEdge includes coverage for clients' computer systems and industrial control systems running their production systems or driving their operational technology.

### Increasing threat of cyber extortion

In case of an Cyber Extortion Event, we cover a full range of services to identify, validate, and resolve the incident. We also cover the increasing use of Cryptocurrency to pay an agreed ransom.

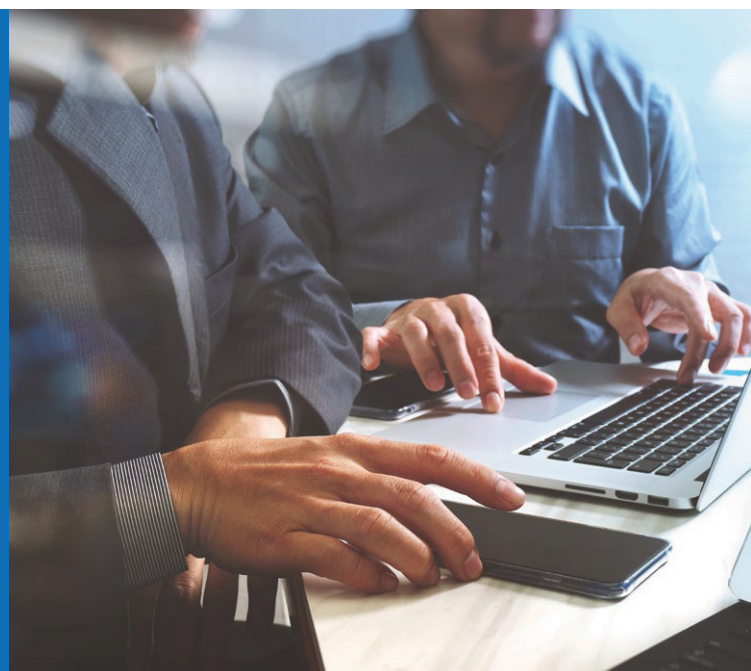
### System component upgrades

In the recovery phase of the cyber incident, CyberEdge now covers the replacement of obsolete and unavailable system components with upgraded replacements to get our clients back on their feet as quickly as possible.

## PLUS:

### All of the CyberEdge benefits that have made it one of the leading cyber insurance policies

Including up to \$10,000 value of cyber loss prevention services, deductible-free 24/7 First Response, outstanding cyber claims expertise.



## For more information:

Norway  
[www.aig.no](http://www.aig.no)

Sweden  
[www.aig.se](http://www.aig.se)

Denmark  
[www.aig.dk](http://www.aig.dk)

Finland  
[www.aig.fi](http://www.aig.fi)